

# SCHÄFERSHOP.



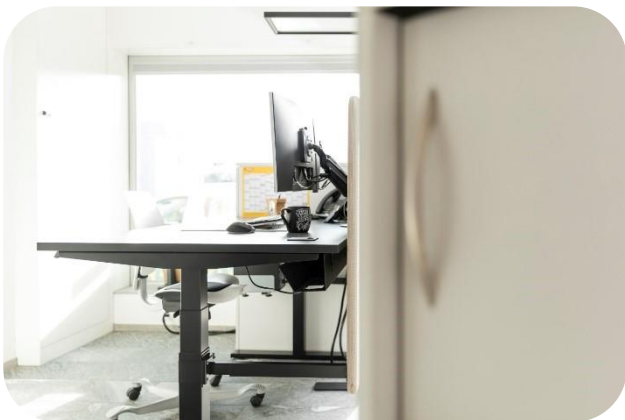
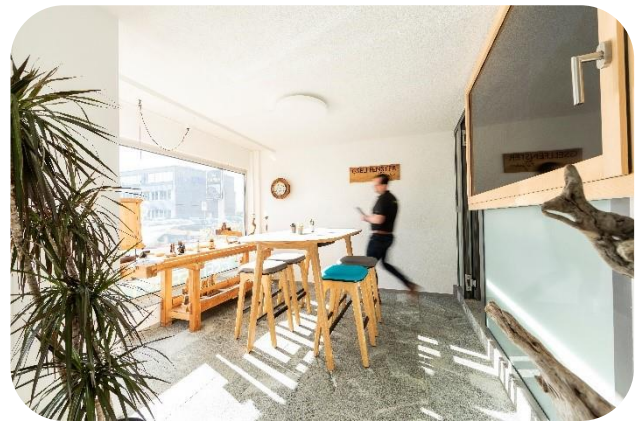
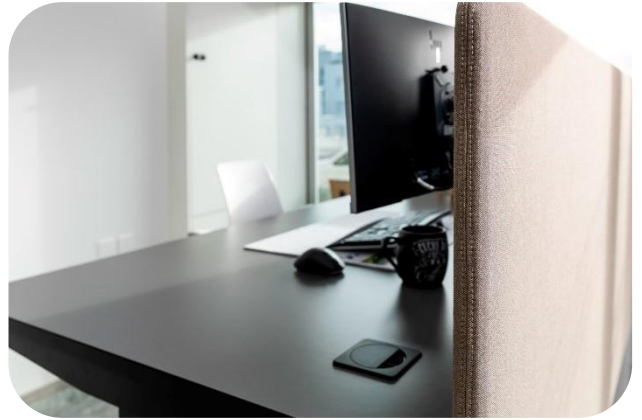
Gsell Fenster GmbH, Romanshorn  
**Tradition Meets Modernity**

[solutions.schaefer-shop.ch/en](https://solutions.schaefer-shop.ch/en)





# SCHÄFERSHOP.



# SCHÄFERSHOP.

Challenge

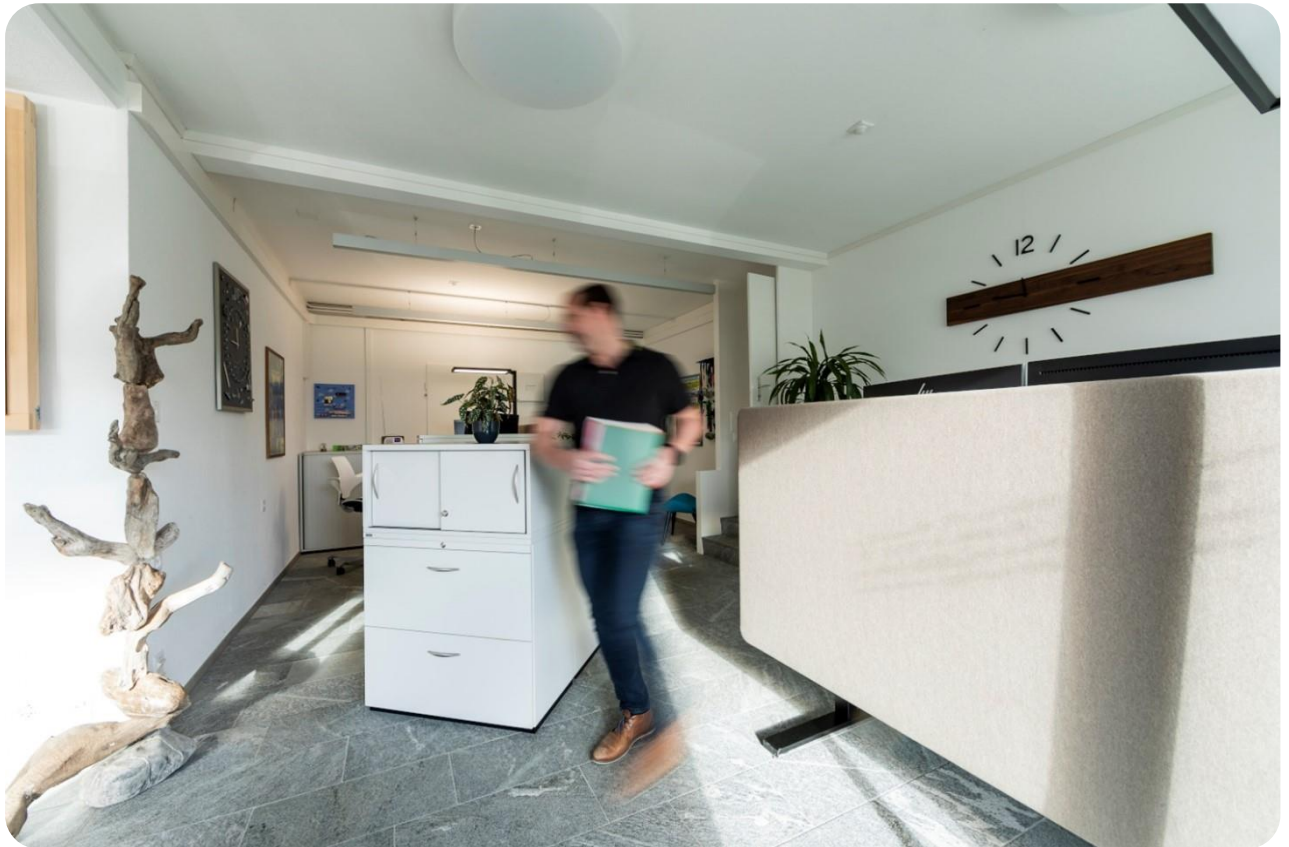
## To Manufacture As Craftsmen – Or Not?

When the office next door, including its storefront, became vacant, it was the perfect opportunity to combine the showroom, office, meeting room, coffee corner, and the archive under one roof.

Initially, it was unclear whether to manufacture the furniture themselves or focus on the core business and hire professionals..

The furnishings had to fit the work processes; it should be a stylish and practical concept that fits both the company and the clients. Electrically adjustable desks, high-quality chairs, and storage space were part of the plan.

And, of course, the comfort factor was in the forefront, as employees spend a significant number of hours at the workplace every day.



Solution

## Individual Solution Through and Through

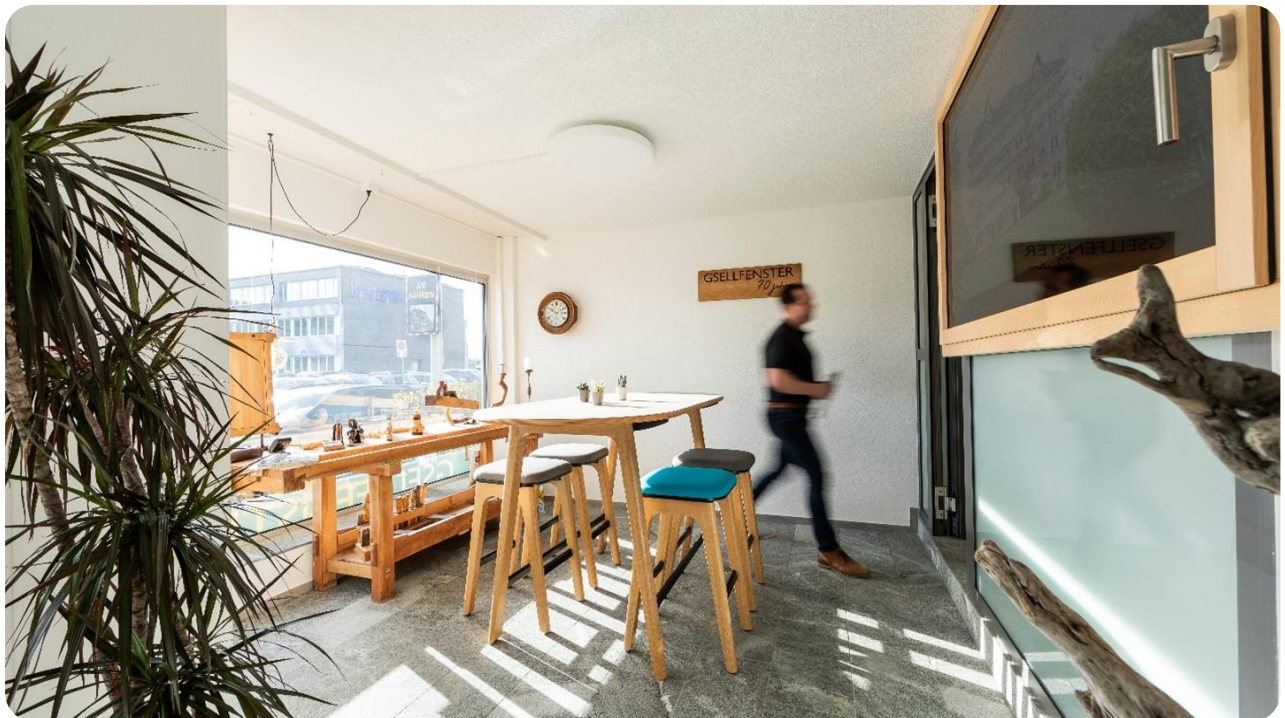
Workplace expert Dominik Lussi visited Peter Gsell at the old location and surveyed and analyzed all work processes. Subsequently, an individual space concept was created from the collected information (combined with the requirements). During this time, Peter Gsell focused on his core business, while the consultant took over the work. The suggestions differed in some points from the customer's ideas but have proven themselves in the meantime..

The workstations are well lit with appropriate floor lamps, and the desk dividers offer both privacy and acoustic optimization. Various storage options are also appreciated, for example during events or at the weekly employee breakfast, which takes place every Thursday. Conclusion: The maximum potential was achieved from the available space.

## Our Services

- Color Consultation
- Acoustic Consultation
- Light Consultation
- Material Consultation
- Ergonomic Consultation
- Workplace Conceptualization
- Complete Planning
- Visualization of the Project
- Scheduling and Coordination
- Customization
- Total Furnishing
- Installation Service

You can find this and other reference objects in our reference section at [www.solutions.schaefer-shop.ch/en](http://www.solutions.schaefer-shop.ch/en)



# SCHÄFERSHOP.



**Work with us to create optimal workplace solutions so that you and your team can work even more efficiently and successfully.**

Are you a startup, SME or corporate group? **Our field service experts help companies of all sizes to create working environments tailored to their needs.** This is because positive and ergonomic working environments motivate employees and at the same time prevent health problems. This in turn leads to greater productivity and better results. **Our customer advisors for office furniture and business equipment take the work off your hands** and develop the perfect solution for your office and your business, directly at your premises - throughout Switzerland and free of charge.

## **Schäfer Shop AG**

Aussendienst & Workplace Solutions  
Showroom für Arbeitsplatzlösungen  
Dünnernstrasse 30  
4702 Oensingen

T +41 62 388 66 52

[aussendienst@schaefer-shop.ch](mailto:aussendienst@schaefer-shop.ch)

[www.solutions.schaefer-shop.ch/en/workplace-experts](http://www.solutions.schaefer-shop.ch/en/workplace-experts)

[www.solutions.schaefer-shop.ch/en](http://www.solutions.schaefer-shop.ch/en)

[solutions.schaefer-shop.ch/en](http://solutions.schaefer-shop.ch/en)

